

PIANO DI GOVERNO DEL TERRITORIO

Delibera di adozione
D.C.C. n°... del .../.../...

Delibera di approvazione
D.C.C. n°... del .../.../...



Comune di Casazza

Piazza della Piave, 2
24060 Casazza (BG)

Sindaco:

Sergio Zappella

Assessore ai LL.PP.
e all'urbanistica:

Renato Totis

Settore Urbanistica,
Edilizia Privata:

Massimiliano Meli

Progettisti variante generale PGT (capogruppo)

Archibemssrl
+ p a r t n e r s

Arch. Mauro Salvadori



Collaboratori:

Dott. Carlotta Marconi

Piazza Roma, 3 - Villanuova sul Clisi (BS) - Italia
Tel 0365 373650 - Fax 0365 31059

C.F. e P.IVA 04128690981

Numero REA BS-59

archibemspartnersrl@pec.it

info@archibems.it

www.archibems.it

Studi di settore

Componente geologica:

Dott. Ezio Granata

Studio Conti Associati

Data: Maggio 2024

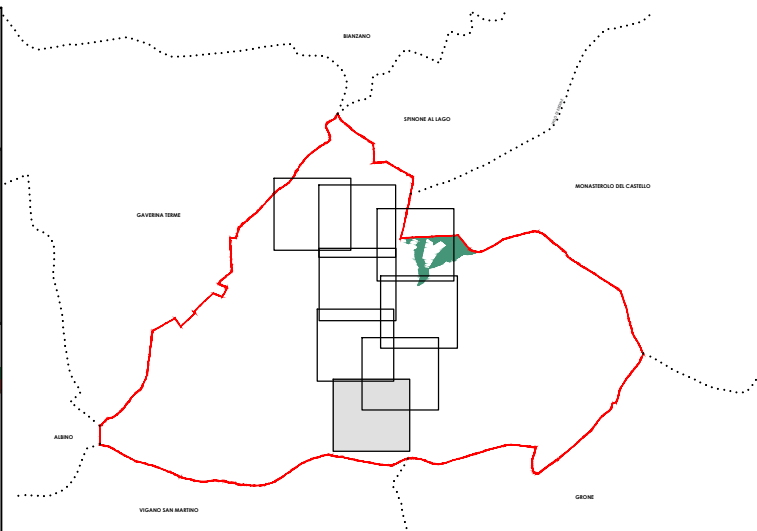
Fase: VAS/Proposta di Piano

Scala: 1:2.000

PIANO DEI SERVIZI

PS01





Quaderno dei servizi

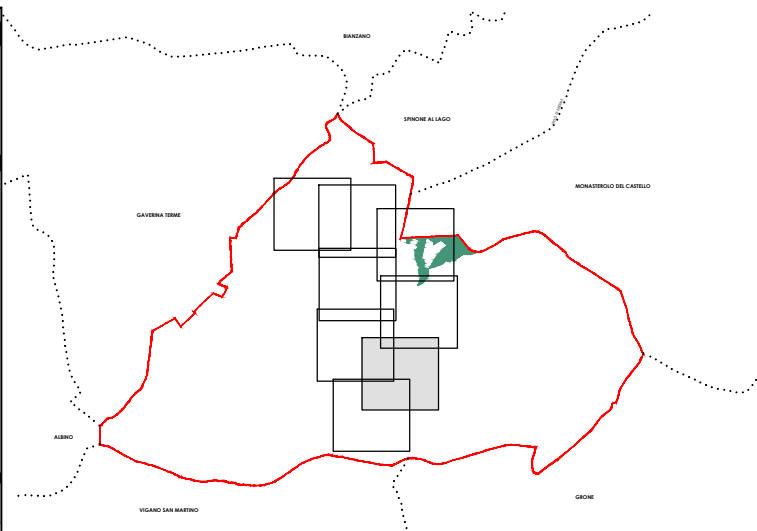
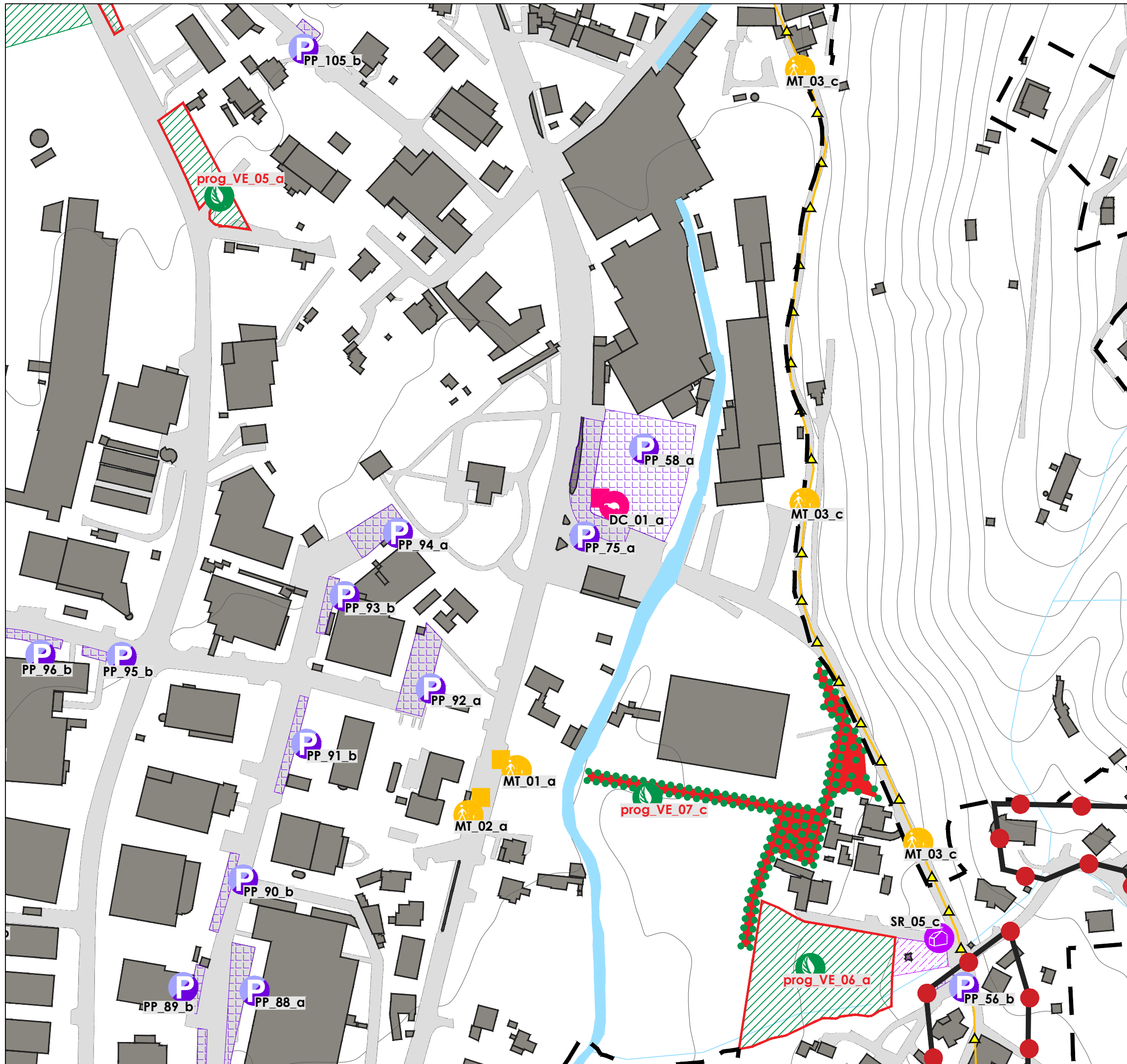


Comune di
Casazza
Piazza della Piave, 2
24060 Casazza (BG)

Archibemssrl
+ partners

LEGENDA:






-  **prog_DC_05_a**
-  **MT_01_a**
MT_02_a
-  **PP_57_a** **PP_87_b** **PP_96_b**
PP_59_a **PP_88_a** **PP_98_b**
PP_60_b **PP_89_b** **PP_99_b**
PP_61_b **PP_90_b**
PP_84_b **PP_91_b**
PP_85_b **PP_92_a**
PP_86_b **PP_95_b**
-  **prog_VE_07_c**
prog_VE_08_c

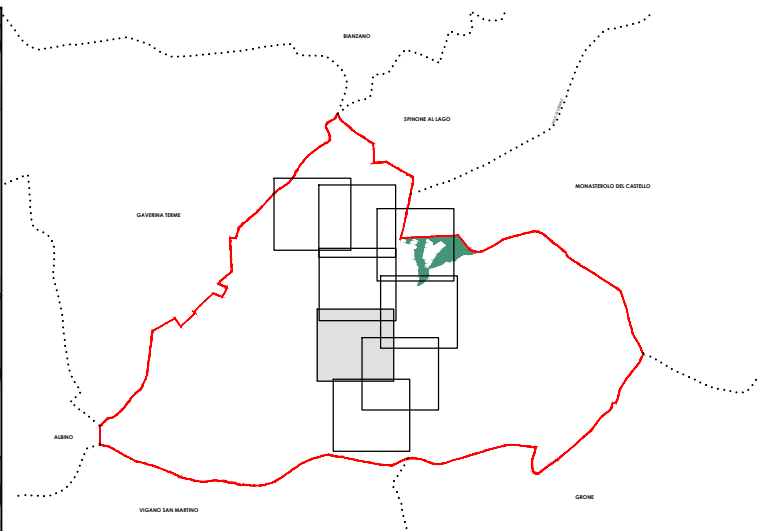
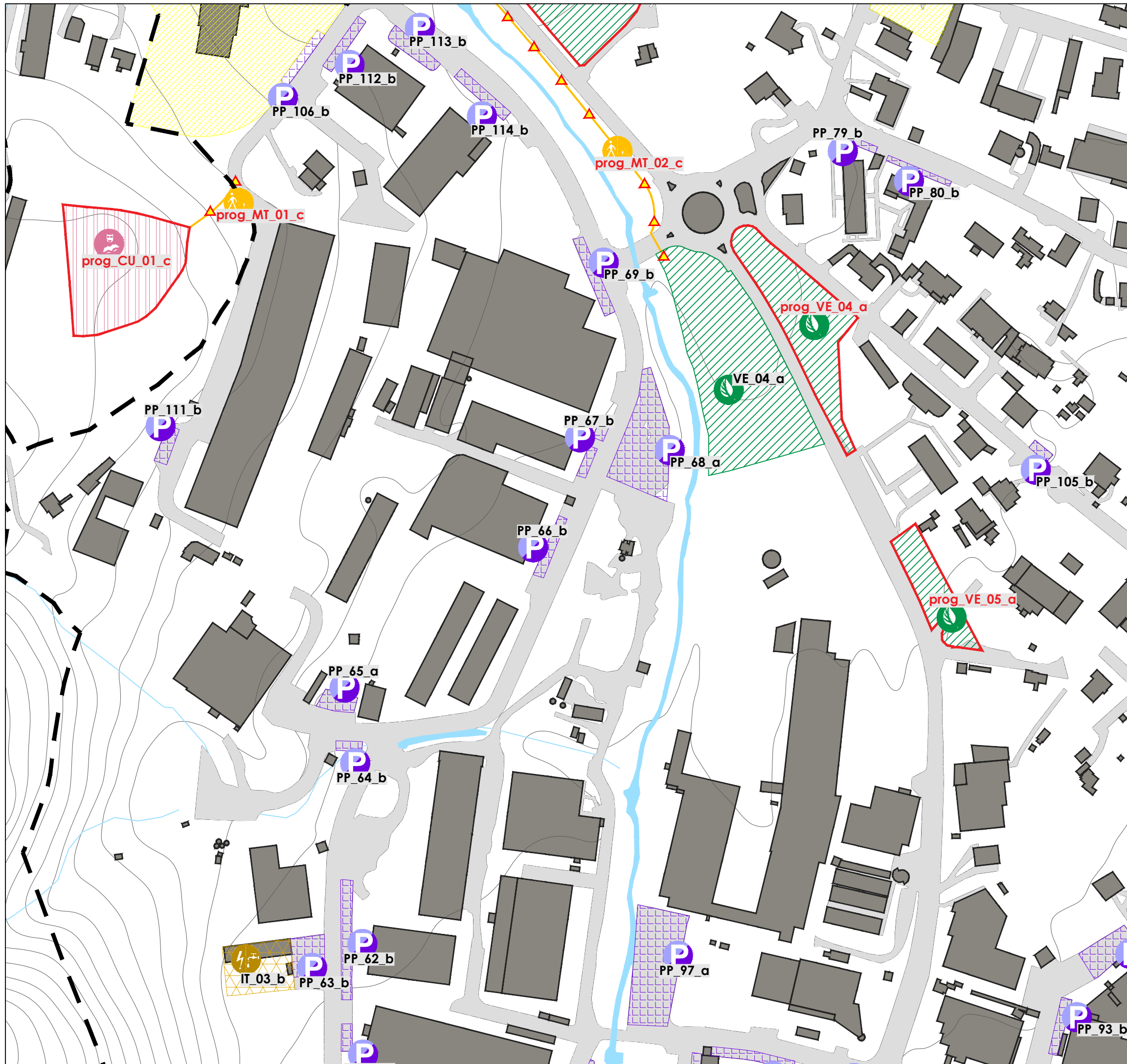


Comune di Casazza
Piazza della Piave, 2
24060 Casazza (BG)

Archibems srl
+ partners

LEGENDA:

- | | | | |
|---|---|---|---|
|  | DC_01_a |  | MT_01_a
MT_02_a
MT_03_c |
|  | PP_56_b
PP_58_a
PP_75_a
PP_88_a
PP_89_b
PP_90_b
PP_91_b |  | prog_VE_05_a
prog_VE_06_a
prog_VE_07_c |
|  | SR_05_c | | |
| | | | PP_92_a
PP_93_b
PP_94_a
PP_95_b
PP_96_b
PP_105_b |



Comune di
Casazza
Piazza della Piave, 2
24060 Casazza (BG)

Archibems srl
+ partners

LEGENDA:



prog_CU_01_c



IT_03_b



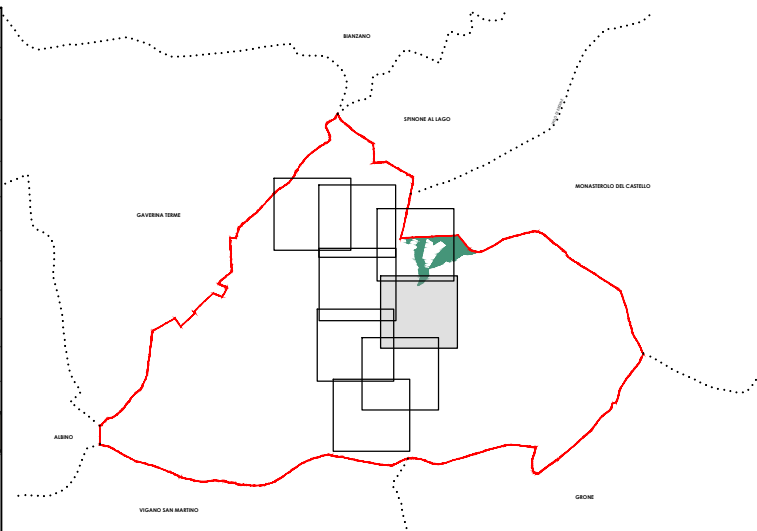
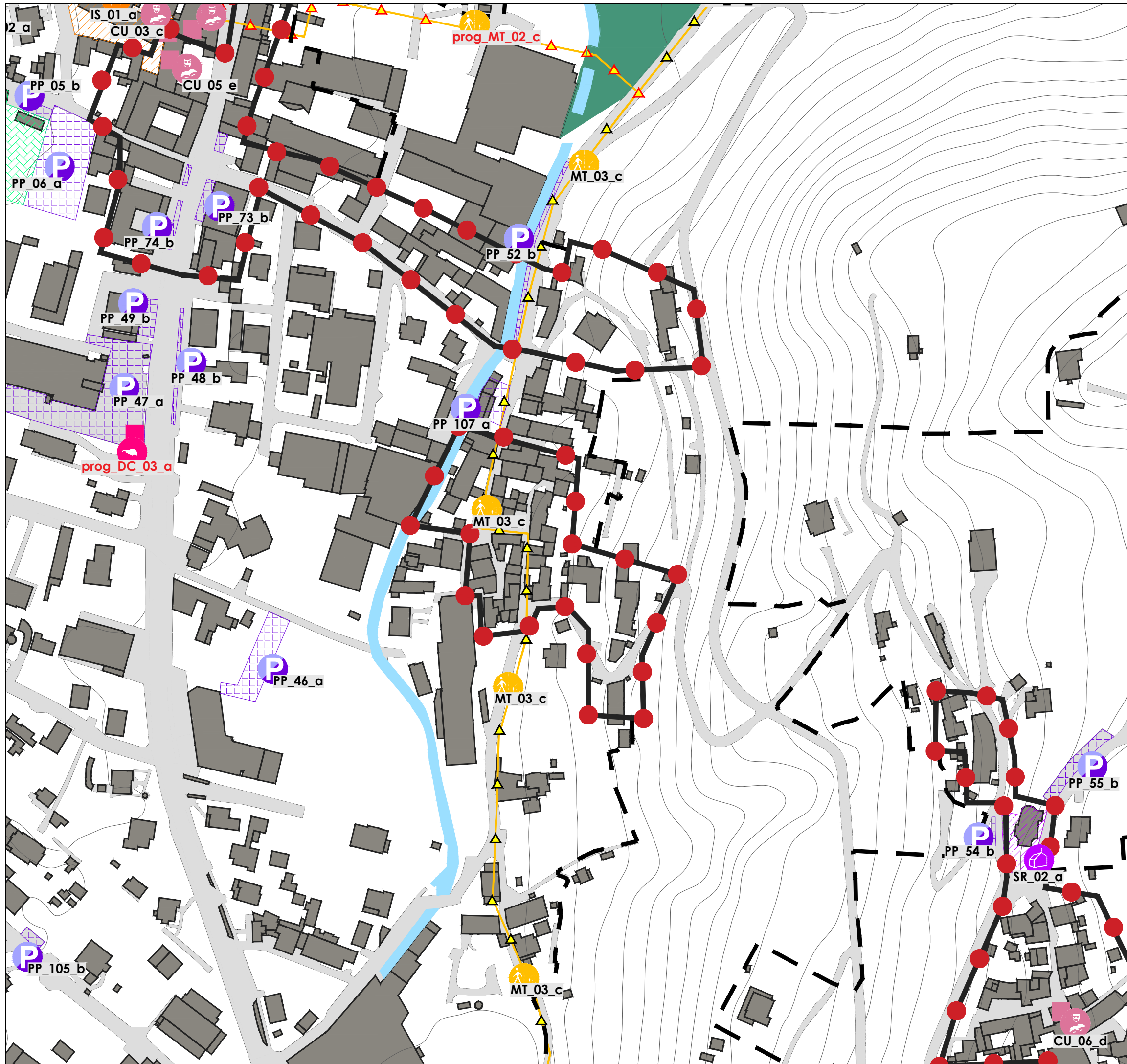
prog_MT_01_c
prog_MT_02_c



PP_62_b	PP_69_b	PP_111_b
PP_63_b	PP_79_b	PP_112_b
PP_64_b	PP_80_b	PP_113_b
PP_65_a	PP_93_b	PP_114_b
PP_66_b	PP_97_a	
PP_67_b	PP_105_b	
PP_68_a	PP_106_b	




VE_04_a
prog_VE_04_a
prog_VE_05_a

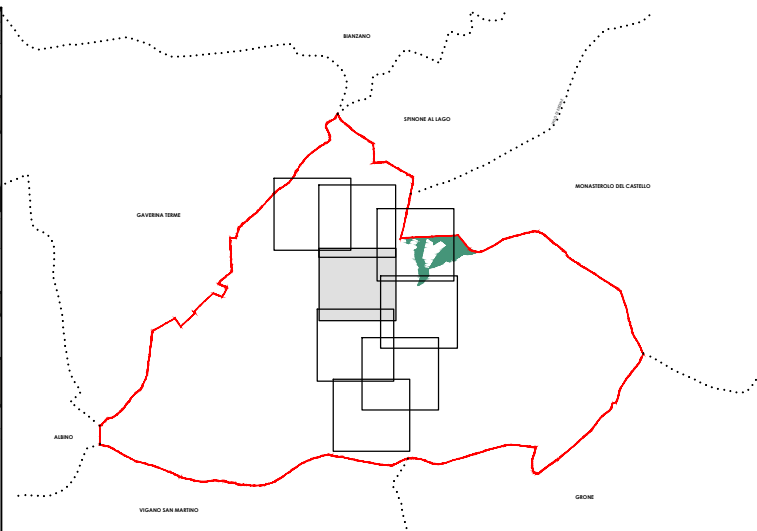
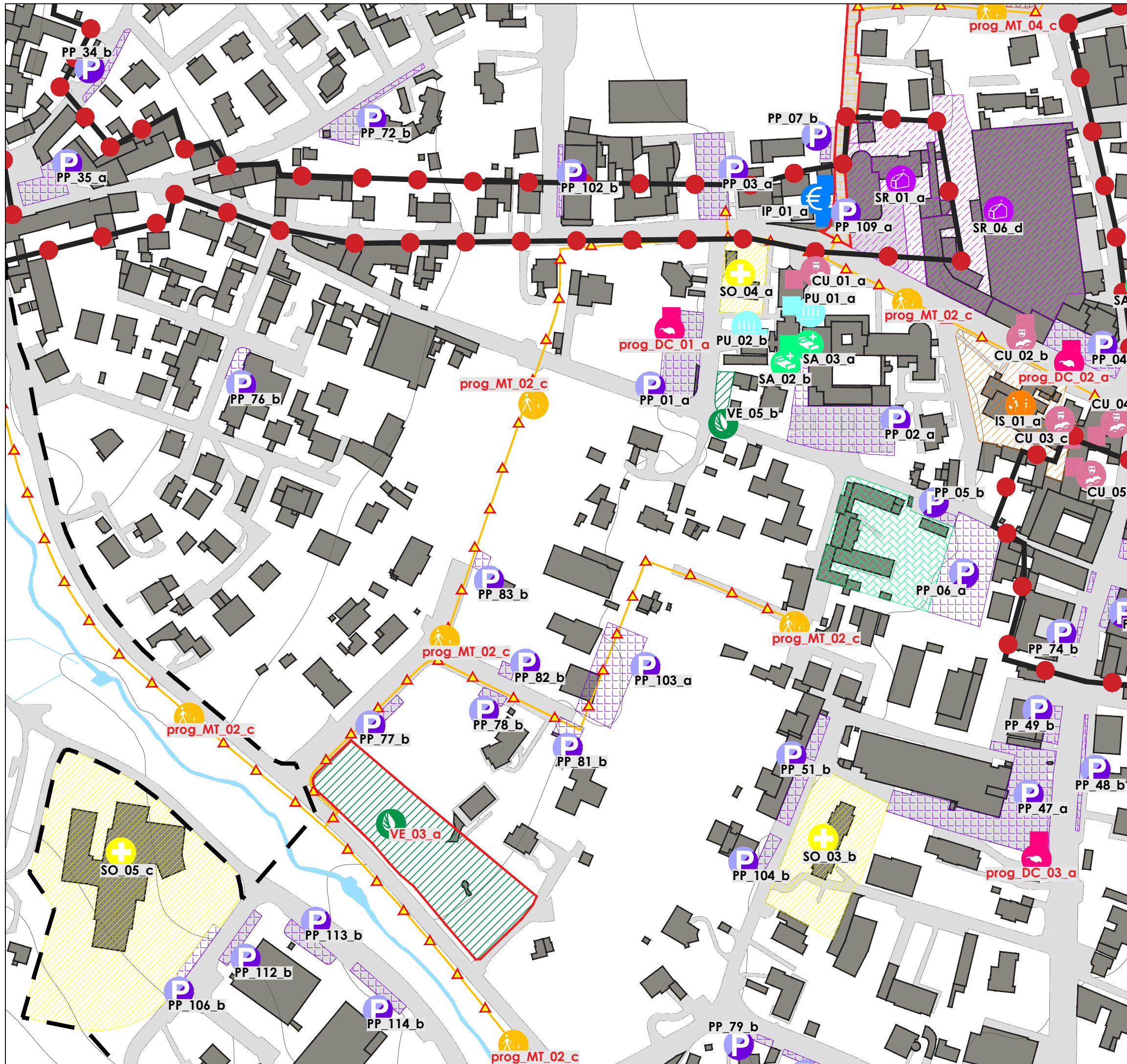


Comune di
Casazza
Piazza della Piave, 2
24060 Casazza (BG)

Archibems srl
+ partners

LEGENDA:







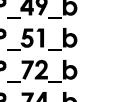

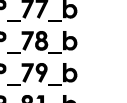





- 
CU_03_c
CU_05_e
CU_06_d
- 
MT_03_c
prog_MT_02_c
- 
PP_05_b
PP_06_a
PP_46_a
PP_47_a
PP_48_b
PP_49_b
PP_52_b
- 
SR_02_a
- 
prog_DC_03_a
- 
PP_54_b
PP_55_b
PP_73_b
PP_74_b
PP_105_b
PP_107_a

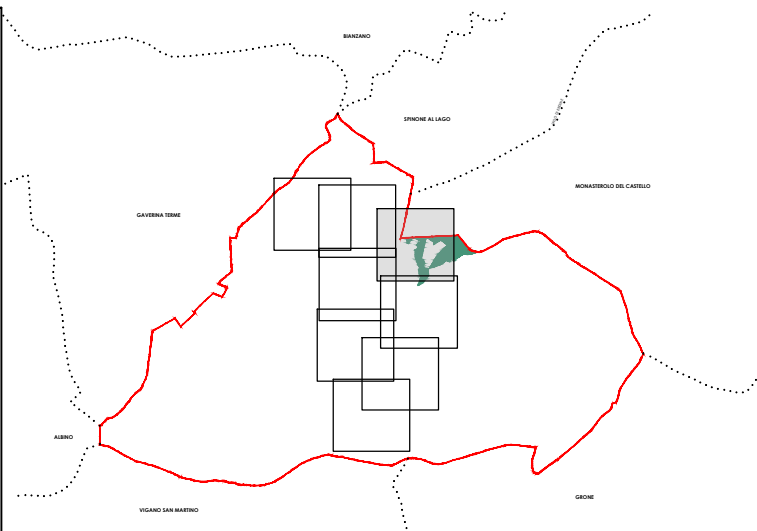
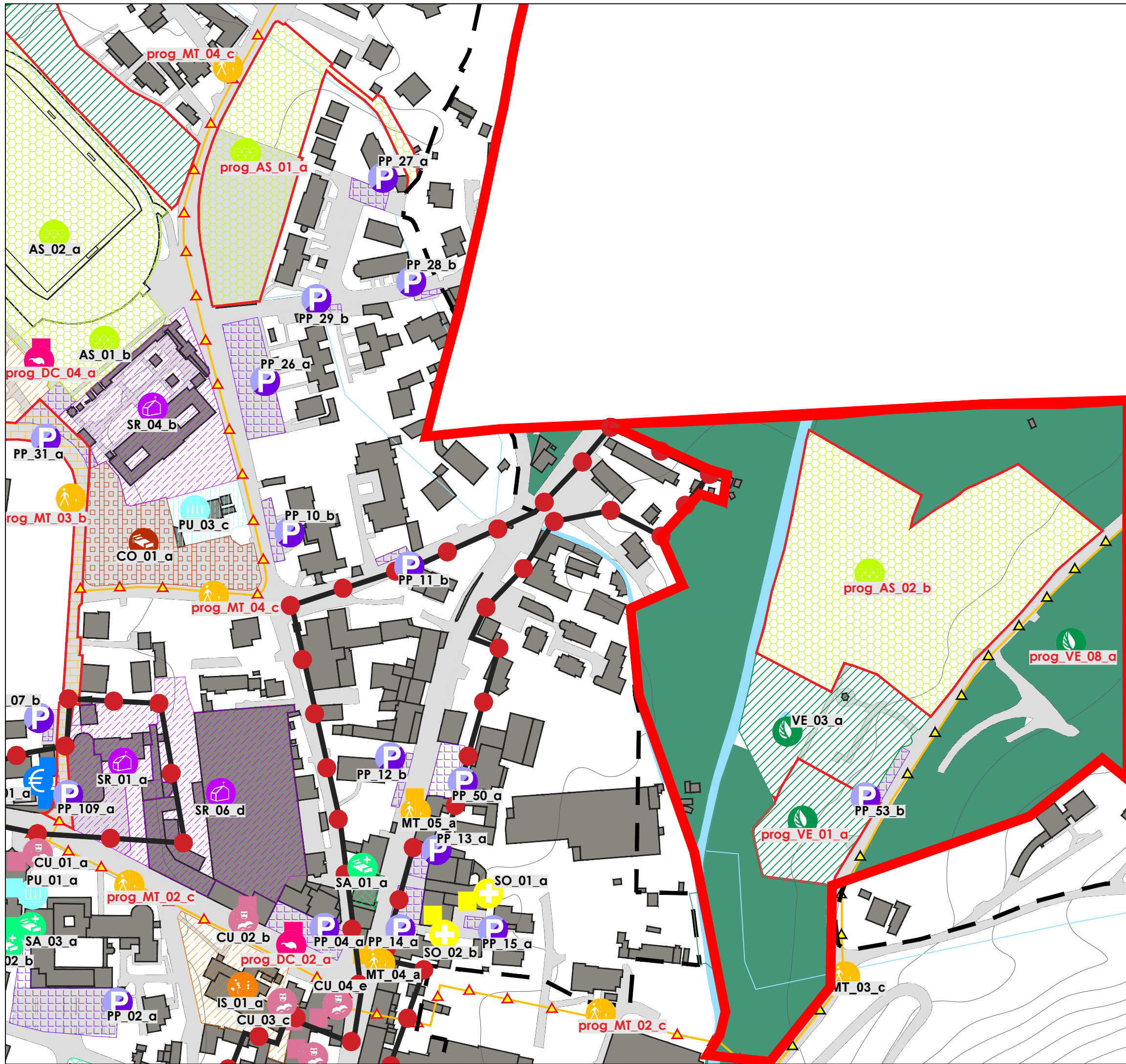



 Comune di
 Casazza
 Piazza della Piave, 2
 24060 Casazza (BG)


 Archibems srl
 + partners

LEGENDA:

- | | | | |
|---|--|---|--|
|  | CU_01_a
CU_02_b
CU_03_c |  | prog_DC_01_a
prog_DC_02_a
prog_DC_03_a |
|  | IP_01_a |  | IS_01_a |
|  | prog_MT_02_c
prog_MT_04_c | | |
|  | PP_01_a
PP_02_a
PP_03_a
PP_05_b
PP_06_a
PP_07_b
PP_34_b
PP_35_a
PP_47_a
PP_48_b |  | PP_49_b
PP_51_b
PP_72_b
PP_74_b
PP_76_b
PP_77_b
PP_78_b
PP_79_b
PP_81_b
PP_82_b |
|  | PP_106_b
PP_112_b
PP_113_b
PP_114_b |  | PP_83_b
PP_102_b
PP_103_a
PP_104_b
PP_106_b
PP_109_a
PP_112_b
PP_113_b
PP_114_b |
|  | PU_01_a
PU_02_b |  | SA_02_b
SA_03_a |
|  | SO_03_b
SO_04_a
SO_05_c |  | SR_01_a
SR_06_d |
|  | VE_05_b
prog_VE_03_a | | |



Comune di
Casazza
Piazza della Piave, 2
24060 Casazza (BG)

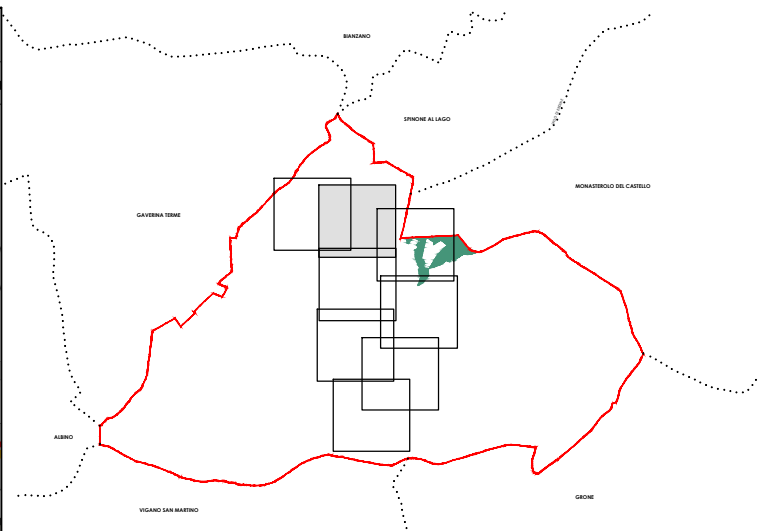
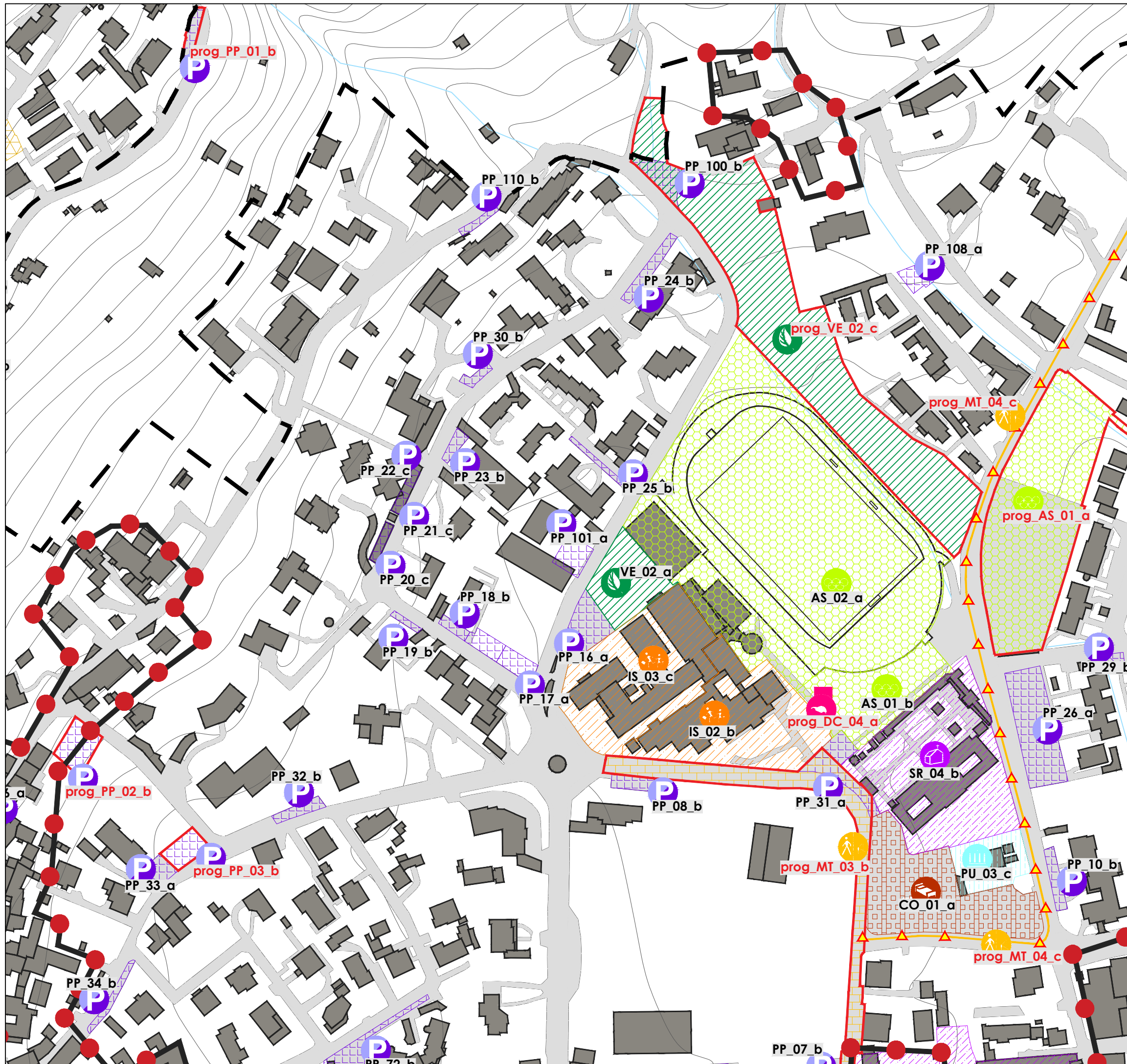
Archibems srl
+ partners

LEGENDA:

- | | | | |
|--|---|--|---|
| | AS_01_b
AS_02_a
prog_AS_01_a
prog_AS_02_b | | CO_01_a |
| | CU_01_a
CU_02_b
CU_03_c
CU_04_e | | prog_DC_02_a
prog_DC_04_a |
| | IS_01_a | | MT_03_c
MT_04_a
MT_05_a
prog_MT_02_c
prog_MT_03_b
prog_MT_04_c |
| | PP_02_a
PP_04_a
PP_10_b
PP_11_b
PP_12_b
PP_13_a
PP_14_a | | PP_15_a
PP_26_a
PP_27_a
PP_28_b
PP_29_b
PP_31_a
PP_50_a |
| | PU_01_a
PU_03_c | | SA_01_a
SA_03_a |
| | SO_01_a
SO_02_b | | SR_01_a
SR_04_b
SR_06_d |
| | VE_03_a
prog_VE_01_a
prog_VE_08_a | | |

All.06

Scala 1:2.000

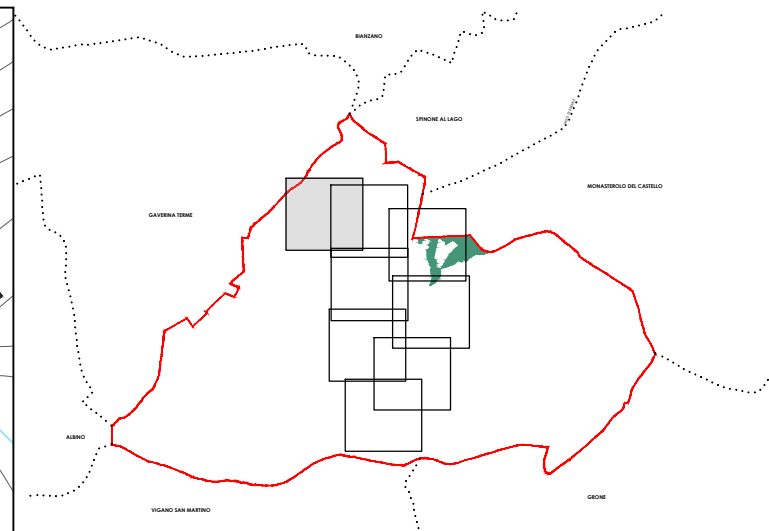
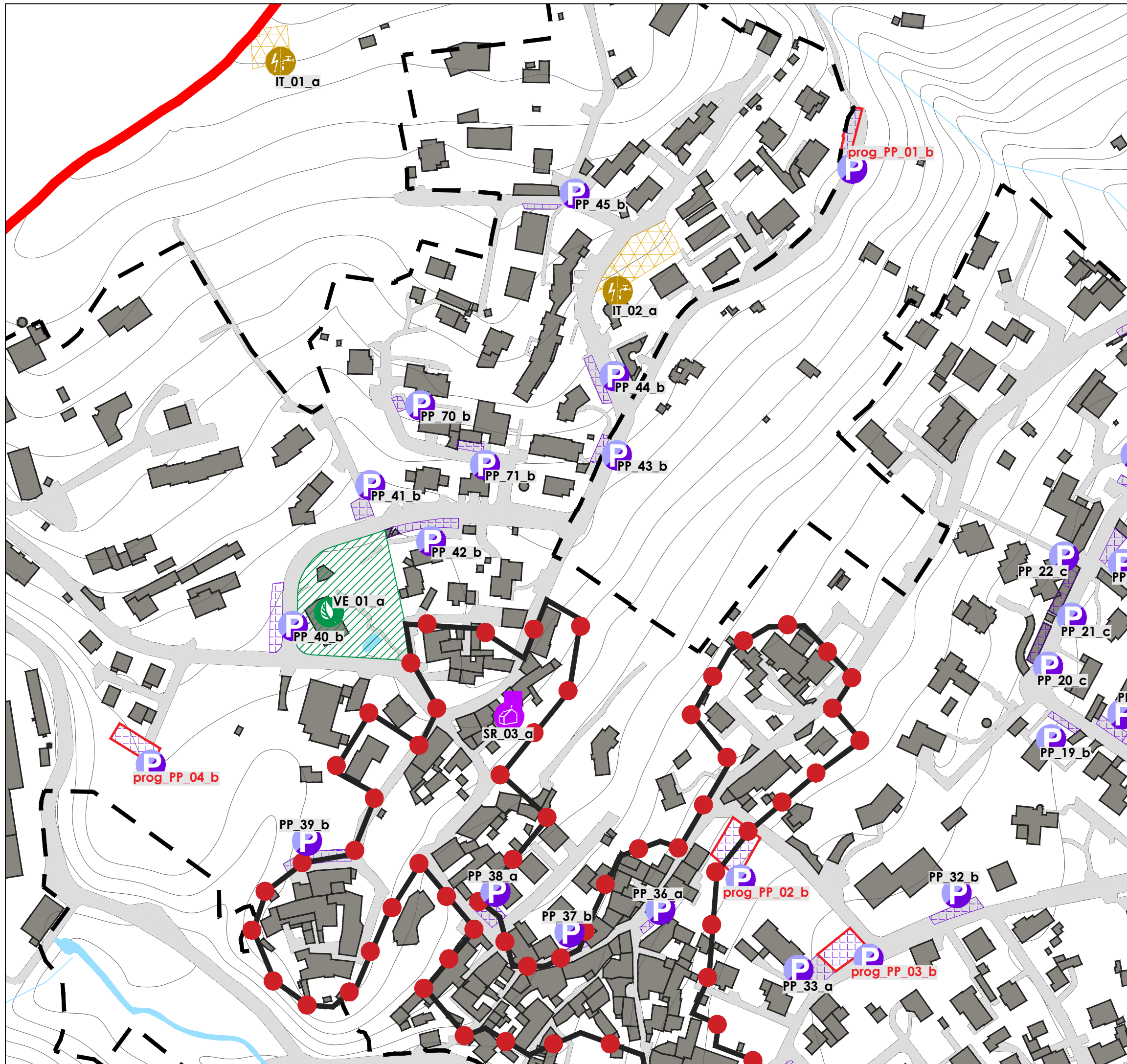


Comune di
Casazza
Piazza della Piave, 2
24060 Casazza (BG)

Archibems srl
+ partners

LEGENDA:





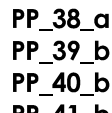
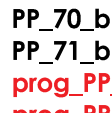
- | | | | |
|--|---|---|---|
| | AS_01_b
AS_02_a
prog_AS_01_a | | CO_01_a |
| | prog_DC_04_a | | IS_02_b
IS_03_c |
| | prog_MT_03_b
prog_MT_04_c | | |
| | PP_08_b
PP_10_b
PP_16_a
PP_17_a
PP_18_b
PP_19_b
PP_20_c
PP_21_c
PP_22_c | PP_23_b
PP_24_b
PP_25_b
PP_26_a
PP_29_b
PP_30_b
PP_31_a
PP_32_b
PP_33_a | PP_34_b
PP_100_b
PP_101_a
PP_108_a
PP_110_b
prog_PP_01_b
prog_PP_02_b
prog_PP_03_b |
| | PU_03_c | | SR_04b |
| | VE_02_a
prog_VE_02_c | | |



Comune di
Casazza
Piazza della Piave, 2
24060 Casazza (BG)

Archibems srl
+ partners
CSO

LEGENDA:

-  IT_01_a
IT_02_a
-  PP_19_b
PP_20_c
PP_21_c
PP_22_c
PP_32_b
PP_33_a
PP_36_a
PP_37_b
-  SR_03_a
-  VE_01_a
-  PP_38_a
PP_39_b
PP_40_b
PP_41_b
PP_42_b
PP_43_b
PP_44_b
PP_45_b
-  PP_70_b
PP_71_b
prog_PP_01_b
prog_PP_02_b
prog_PP_03_b
prog_PP_04_b